

Customer :

customer

Customer part :

customer part

Comment :

Comment

S1=0.03

S2=0.27

Tmax=432

Tp S2=471.0

PI=0.1

HI=39

Sample =8928.4

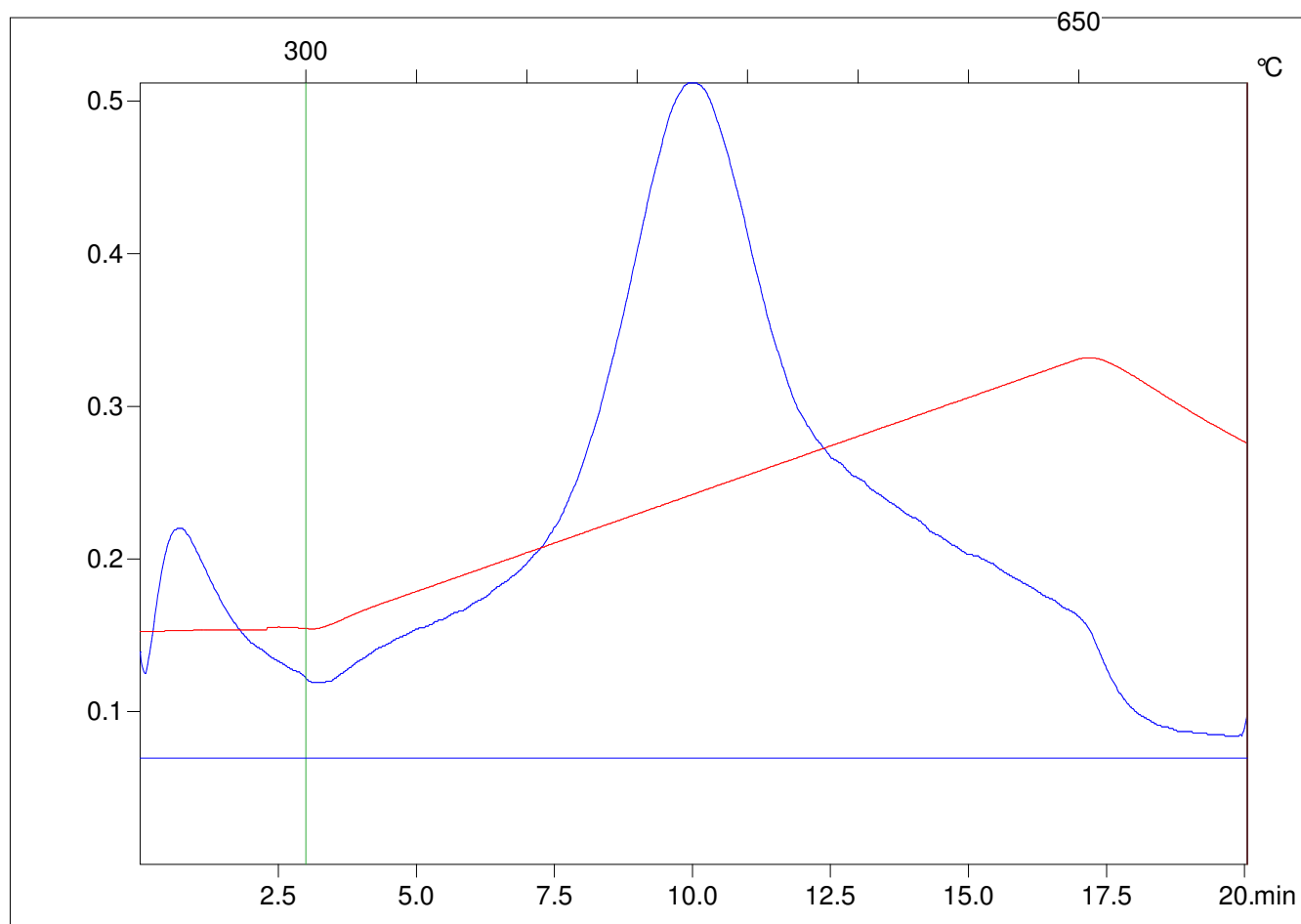
Method =Bulk Rock

Cycle=Basic

KFID(10*9)=1167

Qty =70.2

TOC=0.69



C:\VINC\PK141015\PK060.R00 : FID pyrolysis graphic

State

Pyro Status

Oxi Status